

Power contactor AC-1 200 A Tu= 40 °C, 4-pole, Ue 690 V 100 - 250 V DC, 0.8 ... 1.1 Uc 100 - 250 V AC 50 / 60 Hz 0.85 ... 1.1 Uc
 Connection main circuit: Busbar Auxiliary/control circuit: Screw



Product brand name	SIRIUS
Product designation	Contacteur
Product type designation	3RT13

General technical data

Size of contactor	S6
Product extension	
<ul style="list-style-type: none"> function module for communication 	No
<ul style="list-style-type: none"> Auxiliary switch 	Yes
Surge voltage resistance	
<ul style="list-style-type: none"> of main circuit rated value 	8 kV
<ul style="list-style-type: none"> of auxiliary circuit rated value 	6 kV
Protection class IP	
<ul style="list-style-type: none"> on the front 	IP00; IP20 at front with cover
<ul style="list-style-type: none"> of the terminal 	IP00
Reference code acc. to DIN EN 81346-2	Q

Ambient conditions

Installation altitude at height above sea level	
<ul style="list-style-type: none"> maximum 	2 000 m

Relative humidity	
<ul style="list-style-type: none"> during operation 	95 %
Main circuit	
Number of poles for main current circuit	4
Number of NO contacts for main contacts	4
Operating voltage	
<ul style="list-style-type: none"> at AC <ul style="list-style-type: none"> at 50 Hz rated value at 60 Hz rated value 	690 V 690 V
Operating current	
<ul style="list-style-type: none"> at AC-1 at 400 V <ul style="list-style-type: none"> at ambient temperature 40 °C rated value at AC-1 <ul style="list-style-type: none"> up to 690 V at ambient temperature 40 °C rated value up to 690 V at ambient temperature 60 °C rated value at AC-3 <ul style="list-style-type: none"> at 400 V rated value 	200 A 200 A 175 A 140 A
Minimum cross-section in main circuit	
<ul style="list-style-type: none"> at maximum AC-1 rated value 	95 mm ²
Operating power	
<ul style="list-style-type: none"> at AC-3 <ul style="list-style-type: none"> at 400 V rated value 	75 kW
No-load switching frequency	
<ul style="list-style-type: none"> at AC at DC 	300 1/h 300 1/h
Control circuit/ Control	
Type of voltage	AC
Type of voltage of the control supply voltage	AC/DC
Control supply voltage at AC	
<ul style="list-style-type: none"> at 50 Hz rated value at 60 Hz rated value 	100 ... 250 V 100 ... 250 V
Control supply voltage	
<ul style="list-style-type: none"> at DC rated value 	100 ... 250 V
Operating range factor control supply voltage rated value of magnet coil at DC	
<ul style="list-style-type: none"> initial value Full-scale value 	0.8 1.1
Operating range factor control supply voltage rated value of magnet coil at AC	
<ul style="list-style-type: none"> at 50 Hz 	0.85 ... 1.1

<ul style="list-style-type: none"> • at 60 Hz 	0.85 ... 1.1
Apparent pick-up power of magnet coil at AC	
<ul style="list-style-type: none"> • at 50 Hz 	130 V·A
<ul style="list-style-type: none"> • at 60 Hz 	130 V·A
Apparent holding power of magnet coil at AC	
<ul style="list-style-type: none"> • at 50 Hz 	6 V·A
<ul style="list-style-type: none"> • at 60 Hz 	6 V·A
Closing power of magnet coil at DC	135 W
Holding power of magnet coil at DC	3 W
Closing delay	
<ul style="list-style-type: none"> • at AC 	20 ... 55 ms
<ul style="list-style-type: none"> • at DC 	20 ... 55 ms
Opening delay	
<ul style="list-style-type: none"> • at AC 	40 ... 70 ms
<ul style="list-style-type: none"> • at DC 	40 ... 70 ms
Control version of the switch operating mechanism	Standard A1 - A2

Auxiliary circuit	
Number of NC contacts for auxiliary contacts	2
<ul style="list-style-type: none"> • attachable 	2
<ul style="list-style-type: none"> • instantaneous contact 	2
Number of NO contacts for auxiliary contacts	2
<ul style="list-style-type: none"> • attachable 	2
<ul style="list-style-type: none"> • instantaneous contact 	2
Operating current at AC-15	
<ul style="list-style-type: none"> • at 230 V rated value 	4 A
<ul style="list-style-type: none"> • at 400 V rated value 	3 A
<ul style="list-style-type: none"> • at 500 V rated value 	2 A
<ul style="list-style-type: none"> • at 690 V rated value 	2 A
Operating current at DC-13	
<ul style="list-style-type: none"> • at 24 V rated value 	3 A
<ul style="list-style-type: none"> • at 48 V rated value 	1.5 A
<ul style="list-style-type: none"> • at 110 V rated value 	0.55 A
<ul style="list-style-type: none"> • at 125 V rated value 	0.55 A
<ul style="list-style-type: none"> • at 220 V rated value 	0.3 A

UL/CSA ratings	
Contact rating of auxiliary contacts according to UL	A600 / Q300

Short-circuit protection	
Product function Short circuit protection	No
Design of the fuse link	
<ul style="list-style-type: none"> • for short-circuit protection of the main circuit <ul style="list-style-type: none"> — with type of assignment 2 required 	gG: 250 A (500 V, 100 kA)

- for short-circuit protection of the auxiliary switch required

gG: 10 A (690 V, 1 kA)

Installation/ mounting/ dimensions

Mounting position	For vertical mounting surface can be rotated +/-180°, and with 0° rotation can be tilted forward or backward +/- 30°, or standing
Mounting type	screw fixing
<ul style="list-style-type: none"> • Side-by-side mounting 	Yes
Height	150 mm
Width	120 mm
Depth	128 mm
Required spacing	
<ul style="list-style-type: none"> • with side-by-side mounting <ul style="list-style-type: none"> — forwards — upwards — downwards — at the side • for grounded parts <ul style="list-style-type: none"> — forwards — upwards — at the side — downwards • for live parts <ul style="list-style-type: none"> — forwards — upwards — downwards — at the side 	20 mm 10 mm 10 mm 0 mm 20 mm 10 mm 10 mm 10 mm 20 mm 10 mm 10 mm 10 mm
Net weight	1.75 kg

Connections/ Terminals

Type of electrical connection	
<ul style="list-style-type: none"> • for main current circuit • for auxiliary and control current circuit 	Connection bar screw-type terminals
Connectable conductor cross-section for auxiliary contacts	
<ul style="list-style-type: none"> • single or multi-stranded • finely stranded with core end processing 	1 ... 4 mm ² 0.75 ... 2.5 mm ²
Type of connectable conductor cross-sections	
<ul style="list-style-type: none"> • for auxiliary contacts <ul style="list-style-type: none"> — solid — single or multi-stranded — finely stranded with core end processing • at AWG conductors for auxiliary contacts 	1x (1 ... 4mm ²), 2x (1 ... 4mm ²) 1x (1 ... 4mm ²), 2x (1 ... 4mm ²) 1x (0,75 ... 2,5mm ²), 2x (0,75 ... 2,5mm ²) 1x (AWG 18 ... 14), 2x (AWG 18 ... 14)

AWG number as coded connectable conductor cross section

- for auxiliary contacts

18 ... 14

Safety related data**Product function**

- Mirror contact acc. to IEC 60947-4-1
- positively driven operation acc. to IEC 60947-5-1

Yes

No

Communication/ Protocol**Product function Bus communication**

No

Certificates/ approvals**General Product Approval****EMC****Functional Safety/Safety of Machinery****Declaration of Conformity**

CCC



UL



RCM

[Type Examination Certificate](#)[Miscellaneous](#)**Declaration of Conformity****Test Certificates****Marine / Shipping****other**

EG-Konf.

[Special Test Certificate](#)

ABS



RMRS

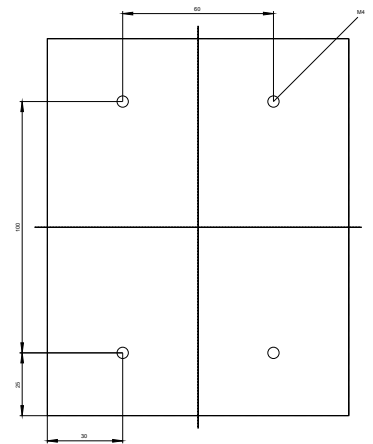
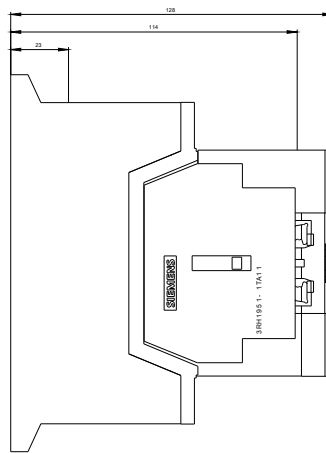
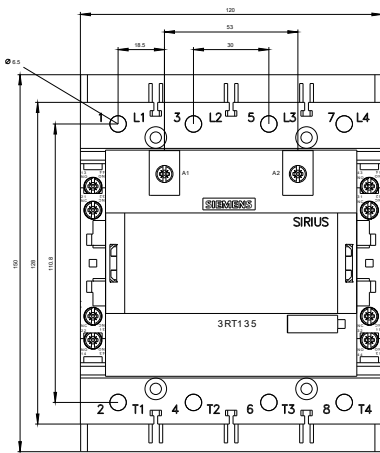
[Confirmation](#)[Miscellaneous](#)**Railway**[Special Test Certificate](#)**Further information****Information- and Downloadcenter (Catalogs, Brochures,...)**www.siemens.com/sirius/catalogs**Industry Mall (Online ordering system)**<https://mall.industry.siemens.com/mall/en/en/Catalog/product?mlfb=3RT1355-6AP36>**Cax online generator**<http://support.automation.siemens.com/WW/CAXorder/default.aspx?lang=en&mlfb=3RT1355-6AP36>**Service&Support (Manuals, Certificates, Characteristics, FAQs,...)**<https://support.industry.siemens.com/cs/ww/en/ps/3RT1355-6AP36>**Image database (product images, 2D dimension drawings, 3D models, device circuit diagrams, EPLAN macros, ...)**http://www.automation.siemens.com/bilddb/cax_de.aspx?mlfb=3RT1355-6AP36&lang=en

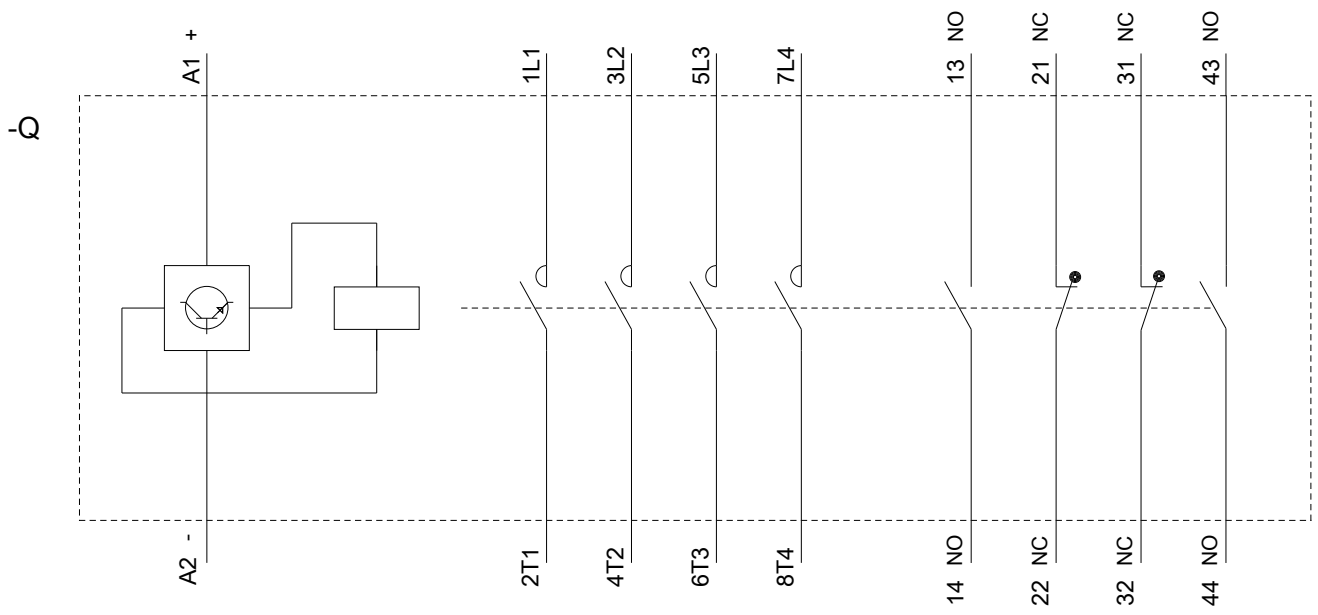
Characteristic: Tripping characteristics, I²t, Let-through current

<https://support.industry.siemens.com/cs/ww/en/ps/3RT1355-6AP36/char>

Further characteristics (e.g. electrical endurance, switching frequency)

<http://www.automation.siemens.com/bilddb/index.aspx?view=Search&mlfb=3RT1355-6AP36&objecttype=14&gridview=view1>





last modified:

09/04/2019